

# AHCPU560-EN2

EN Instruction Sheet  
TR Bilgi Dökümanı  
TW 安裝說明  
CN 安装说明



5014070102  
2022-05-13



[www.deltaww.com](http://www.deltaww.com)



- EN ✗ This is an OPEN TYPE module and therefore should be installed in an enclosure free of airborne dust, humidity, electric shock and vibration. The enclosure should prevent non-maintenance staff from operating the device (e.g. key or specific tools are required for operating the enclosure) in case danger and damage on the device may occur.
- FR ✗ Ceci est un module ouvert et il doit donc être installé dans un coffret à l'abri des poussières, des vibrations et ne pas être exposé aux chocs électriques. Le boîtier ou l'armoire doit éviter toute action d'un personnel autre que celui affecté à la maintenance de l'appareil (par exemple, clefs, outils spécifiques pour l'ouverture du coffret), ceci afin d'éviter tout accident corporel ou endommagement du produit).
- TR ✗ Bu ürün AÇIK TİP bir modül olup toz, rutubet, elektrik şoku ve titreşimden uzak kapalı yerlerde muhafaza edilmelidir. Yanlış kullanım sonucu ürünün zarar görmesini önlemek için yetkili olmayan kişiler tarafından ürüne müdahale edilmesini önleyecek koruyucu önlemler alınmalıdır. (Ürünün bulunduğu panoya kilit konulması gibi).
- TW ✗ 本機為開放型 ( OPEN TYPE ) 機種，因此使用者使用本機時，必須將之安裝於具防塵、防潮及免於電擊/衝擊意外之外殼配線箱內。另必須具備保護措施 ( 如：特殊之工具或鑰匙才可打開 ) 防止非維護人員操作或意外衝擊本體，造成危險及損壞。
- CN ✗ 本機為開放型 ( OPEN TYPE ) 機種，因此使用者使用本機時，必須將其安裝於具防塵、防潮及免於電擊/沖擊意外的外殼配線箱內。另必須具備保護措施 ( 如：特殊的工具或鑰匙才可打開 ) 防止非維護人員操作或意外沖擊本體，造成危險及損壞。

EN Please refer to the AH500 Series Hardware and Operation Manual for more information

TR Daha fazla bilgi için lütfen AH500 Serisi Donanım ve Kullanım Klavuzuna bakınız.

TW 詳細資料請參考 AH500 系列硬體及操作手冊

CN 详细资料请参考 AH500 系列硬件及操作手册

EN Assembly

TR Montaj

TW 安裝

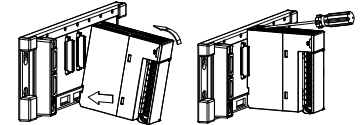
CN 组装

EN Insert the module projections into the holes on the backplane. Then, push the module in the direction indicated by the arrow until it clicks. Finally, tighten the screws on the module.

TR Modül çıkıntısını alt panel üzerindeki deliklere yerleştiriniz. Daha sonra ok işareti ile gösterilen yönde tıkkalayınca kadar modülü itiniz. Son olarak modül üzerindeki vidaları sıkınız.

TW 將模組下方的卡勾卡在背板的卡槽，對準背板的 IO 介面將此模組向前壓，安裝後將此模組上方的螺絲鎖緊。

CN 將模块下方的卡勾卡在背板的卡槽，对准背板的 IO 接口将此模块向前压，安装后将此模块上方的螺丝锁紧。



EN Ethernet pin definition

TR Ethernet pin açıklama

TW Ethernet 接腳定義

CN Ethernet 接脚定义

1 TX+

2 TX-

3 RX+

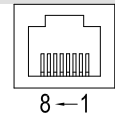
4 N/C

5 N/C

6 RX-

7 N/C

8 N/C



EN COM pin definition

TR COM pin açıklama

TW COM 接腳定義

CN COM 接脚定义

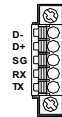
1 TX : RS-232 TX

4 D+ : RS-485 D+

2 RX : RS-232 RX

5 D- : RS-485 D-

3 SG : GROUND



EN DIP switch function

TR DIP anahtar fonksiyonu

TW DIP 開關功能

CN DIP 开关功能

**SW1:** Write protection

**SW1:** Yazma koruması

**SW1:** 寫入保護功能

**SW1:** 写入保护功能

**SW2:** The system-copying function

**SW2:** Modüle enerji verildiğinde

**SW2:** 上電時執行系統複製功能

**SW2:** 上电时执行系统复制功能

is executed when the module is

sistem kopyalama fonksiyonu çalışır.

powered.

**SW3/SW4:** System backup

**SW3/SW4:** Sistem yedekleme

**SW3/SW4:** 系統備份功能

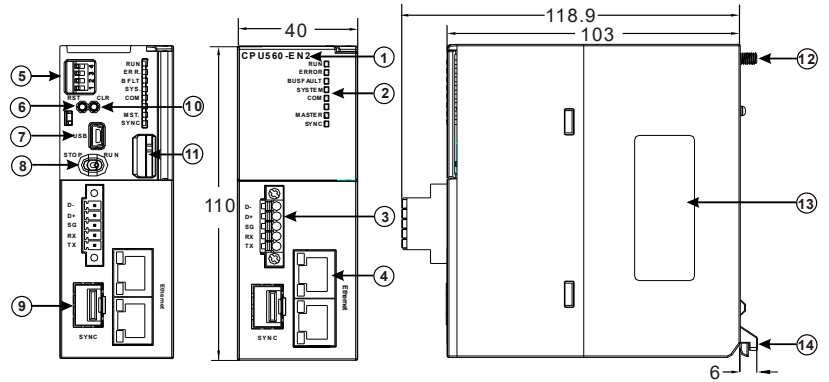
**SW3/SW4:** 系统备份功能

EN Dimensions(mm) & Product Profile

TR Ölçüler(mm) & Ürün Görünüşü

TW 尺寸 ( mm ) 及產品外觀

CN 尺寸 ( mm ) 及產品外觀



EN	TR	TW	CN
1 Model name	Model adı	機種名稱	机种名称
2 Status indicator	Durum göstergesi	狀態指示燈	状态指示灯
3 Communication port	Seri Haberleşme port	COM 通訊埠	COM 通讯口
4 Ethernet Communication port	Ethernet Haberleşme port	Ethernet 通訊埠	Ethernet 通讯口
5 DIP switches	DIP anahtarlar	DIP 開關	DIP 开关
6 RST button	RST buton	RST 按鈕	RST 按钮
7 USB communication port	USB haberleşme port	USB 通訊埠	USB 通讯口
8 RUN/STOP switch	RUN/STOP anahtarı	RUN/STOP 開關	RUN/STOP 开关
9 Fiber optic port	Fiber optik port	光纖通訊埠	光纤通讯端口
10 CLR button	CLR buton	CLR 按鈕	CLR 按钮
11 SD card slot	SD kard slot	SD 卡插槽	SD 卡插槽
12 Screw	Vida	固定螺絲	固定螺丝
13 Label	Etiket	標籤	标签
14 Module clip	Modül klipsi	模組固定卡口	模块固定卡口

Part Name	Hazardous Substances						Industrial Automation Headquarters Delta Electronics, Inc.
	Pb	Hg	Cd	Cr VI	PBB	PBDE	
金屬部件 Metal Part	X	O	O	O	O	O	<b>Industrial Automation Headquarters Delta Electronics, Inc.</b> Taoyuan Technology Center No.18, Xinglong Rd., Taoyuan District, Taoyuan City, 33068, Taiwan TEL: 886-3-362-6301 / FAX: 886-3-371-6301
塑料部件 Plastic Part	O	O	O	O	O	O	
電子件 Electronic	X	O	O	O	O	O	<b>Delta Greentech (China) Co., Ltd.</b> 238 Min-Xia Road, Pudong District, Shanghai, P.R.C. 201209 TEL: 86-21-5863-5678 / FAX: 86-21-5863-0003
触点 Contacts	O	O	X	O	O	O	
線纜和線纜 附件 Cable & Cabling accessories	X	O	O	O	O	O	沈阳 电话:(024)2334-1160 济南 电话:(0531)8690-6277 杭州 电话:(0571)8882-0610 重庆 电话:(023)8806-0306 乌鲁木齐 电话:(0991)4678-141 天津 电话:(022)2301-5082 哈尔滨 电话:(0451)5366-5568 太原 电话:(0351)4039-485 合肥 电话:(0551)6281-6777 昆明 电话:(0871)6313-7362 兰州 电话:(0931)6406-725 南京 电话:(025)8334-6585 长春 电话:(0431)8892-5060 郑州 电话:(0371)6384-2772 武汉 电话:(027)8544-8475 广州 电话:(020)3879-2175 西安 电话:(029)8836-0780 长沙 电话:(0731)8549-9156 呼和浩特 电话:(0471)6297-808 石家庄 电话:(0311)8666-7337 南昌 电话:(0791)8625-5010 厦門 电话:(0592)5313-601 贵阳 电话:(0851)8690-1374 福州 电话:(0591)8755-1305 北京 电话:(010)8225-3225 上海 电话:(021)6301-2827 成都 电话:(028)8434-2075 南京 电话:(0771)2621-501 北京 电话:(010)8225-3225 上海 电话:(021)6301-2827
電池 Battery	O	O	O	O	O	O	
本表格依据 SJ/T 11364 的规定编制。 O: 表示该有害物质在该部件所有均质材料中的含量均在 GB/T 26572 规定的限量要求以下。 X: 表示该有害物质至少在该部件的某一均质材料中的含量超出 GB/T 26572 规定的限量要求。 This table is made according to SJ/T 11364. O: Indicates that the concentration of hazardous substance in all of the homogeneous materials for this part is below the limit as stipulated in GB/T 26572. X: Indicates that concentration of hazardous substance in at least one of the homogeneous materials used for this part is above the limit as stipulated in GB/T 26572.							* 本手冊內容若有變更，恕不另行通知。 * 本手冊內容若有改動，恕不另行通知。
<b>Asia</b> China: Delta Electronics (Shanghai) Co., Ltd. No.182 Minyu Rd., Pudong Shanghai, P.R.C. Post code : 201209 TEL: +86-21-6872-3988 / FAX: +86-21-6872-3996 Customer Service: 400-820-9595 Japan: Delta Electronics (Japan), Inc. Industrial Automation Sales Department 2-1-14 Shibadai, Minato-ku Tokyo, Japan 105-0012 TEL: +81-3-5733-1155 / FAX: +81-3-5733-1255 Korea: Delta Electronics (Korea), Inc. 1511, 219, Gassan Digital 1-Ro., Geumcheon-gu, Seoul, 08501 South Korea TEL: +82-2-515-5305 / FAX: +82-2-515-5302 Singapore: Delta Energy Systems (Singapore) Pte Ltd. 4 Kaki Bukit Avenue 1, #05-04, Singapore 417939 TEL: +65-6747-5155 / FAX: +65-6744-9228 India: Delta Electronics (India) Pvt. Ltd. Plot No.43, Sector 35, HSIDC Gurgaon, PIN 122001, Haryana, India TEL: +91-124-4874900 / FAX: +91-124-4874945		<b>Thailand: Delta Electronics (Thailand) PCL</b> 909 Soi 9, Moo 4, Bangpoo Industrial Estate (E.P.Z), Pattana 1 Rd., T.Phraksa, A.Muang, Samutprakarn 10280, Thailand TEL: +66-2709-2800 / FAX: +66-2709-2827 <b>Australia: Delta Electronics (Australia) Pty Ltd.</b> Unit 20-21/45 Normanby Rd., Notting Hill Vic 3168, Australia TEL: +61-3-9543-3720 <b>Americas</b> <b>USA: Delta Electronics (Americas) Ltd.</b> 5101 Davis Drive, Research Triangle Park, NC 27709, U.S.A. TEL: +1-919-767-3813 / FAX: +1-919-767-3969 <b>Brazil: Delta Electronics Brazil Ltd.</b> Estrada Velha Rio-São Paulo, 5300 Eugênio de Melo - São José dos Campos CEP:12247-004-SP- Brazil TEL: +55-12-3932-2300 / FAX: +55-12-3932-237 <b>Mexico: Delta Electronics International Mexico S.A. de C.V.</b> Gustavo Baz No. 309 Edificio E PB 103 Colonia La Loma, CP 54060 Tlalnepantla, Estado de México TEL: +52-55-3603-9200		<b>EMEA Headquaters: Delta Electronics (Netherlands) B.V.</b> Sales: Sales.IA.EMEA@deltaww.com Marketing: Marketing.IA.EMEA@deltaww.com Technical Support: itechemicalsupport@deltaww.com Customer Support: Customer-Support@deltaww.com Service: Service.IA.emea@deltaww.com TEL: +31(0)40 800 3900 <b>BENELUX: Delta Electronics (Netherlands) B.V.</b> Automotive Campus 260, 5708 JZ Helmond, The Netherlands Mail: Sales.IA.Benelux@deltaww.com TEL: +31(0)40 800 3900 <b>DACH: Delta Electronics (Netherlands) B.V.</b> Coesterweg 45, D-59494 Soest, Germany Mail: Sales.IA.DACH@deltaww.com TEL: +49(0)2921 987 0 <b>France: Delta Electronics (France) S.A.</b> ZI du bois Chaland 2, 15 rue des Pyrénées, Lisses, 91090 Evry Cedex, France Mail: Sales.IA.FR@deltaww.com TEL: +33(0)1 69 77 82 60 <b>UK: Delta Electronics Europe Ltd.</b> 1 Redwood Court, East Kilbride, Glasgow, G74 5PF, United Kingdom TEL: +44-1355-588-888		<b>Iberia: Delta Electronics Solutions (Spain) S.L.U</b> Ctra. De Villaverde a Valdecas, 265 1º Dcha Ed. Hormigueras – P.I. de Valdecas 28031 Madrid TEL: +34(0)91 223 74 20 Carrer Llacuna 166, 08018 Barcelona, Spain Mail: Sales.IA.Iberia@deltaww.com <b>Italy: Delta Electronics (Italy) S.r.l.</b> Via Meda 2-22060 Novedrate(CO) Piazza Grazioli 18 00186 Roma Italy Mail: Sales.IA.Italy@deltaww.com TEL: +39 039 8900365 <b>Russia: Delta Energy System LLC</b> Vereyskaya Plaza II, office 112 Vereyskaya str. 17 121357 Moscow Russia Mail: Sales.IA.RU@deltaww.com TEL: +7 495 644 3240 <b>Turkey: Delta Greentech Elektronik San. Ltd. Sti. (Turkey)</b> Şenfall Mah. Hendem Cad. Kule Sok. No:16-A 34775 Ümraniye – İstanbul Mail: Sales.IA.Turkey@deltaww.com TEL: +90 216 499 9910 <b>MEA: Eltek Dubai (Eltek MEA DMCC)</b> OFFICE 2504, 25th Floor, Saba Tower 1, Jumeirah Lakes Towers, Dubai, UAE Mail: Sales.IA.MEA@deltaww.com TEL: +971(0)4 2690148	
*We reserve the right to change the information in this instruction sheet without prior notice.							