

AH10DNET-5A

AHX10DNET-5A

EN Instruction Sheet
TR Bilgi Dökümanı
TW 安裝說明
CN 安装说明



5011697903
2022-05-13



www.deltaww.com



- EN ✗ This is an OPEN TYPE module and therefore should be installed in an enclosure free of airborne dust, humidity, electric shock and vibration. The enclosure should prevent non-maintenance staff from operating the device (e.g. key or specific tools are required for operating the enclosure) in case danger and damage on the device may occur.
- FR ✗ Ceci est un module ouvert et il doit donc être installé dans un coffret à l'abri des poussières, des vibrations et ne pas être exposé aux chocs électriques. Le boîtier ou l'armoire doit éviter toute action d'un personnel autre que celui affecté à la maintenance de l'appareil (par exemple, clefs, outils spécifiques pour l'ouverture du coffret), ceci afin d'éviter tout accident corporel ou endommagement du produit).
- TR ✗ Bu ürün AÇIK TİP bir modül olup toz, rutubet, elektrik şoku ve titreşimden uzak kapalı yerlerde muhafaza edilmelidir. Yanlış kullanım sonucu ürünün zarar görmesini önlemek için yetkili olmayan kişiler tarafından ürüne müdahale edilmesini önleyecek koruyucu önlemler alınmalıdır. (Ürünün bulunduğu panoya kilit konulması gibi).
- TW ✗ 本機為開放型 (OPEN TYPE) 機種，因此使用者使用本機時，必須將之安裝於具防塵、防潮及免於電擊衝擊意外之外殼配線箱內。另必須具備保護措施 (如：特殊之工具或鑰匙才可打開) 防止非維護人員操作或意外衝擊本體，造成危險及損壞。
- CN ✗ 本機為開放型 (OPEN TYPE) 機種，因此使用者使用本機時，必須將其安裝於具防塵、防潮及免于電擊/冲击意外的外壳配線箱內。另必須具備保護措施 (如：特殊的工具或鑰匙才可打開) 防止非維護人員操作或意外冲击本体，造成危險及損壞。

EN Please refer to the AH500 Series Hardware and Operation Manual for more information

TR Daha fazla bilgi için lütfen AH500 Serisi Donanım ve Kullanım Klavuzuna bakınız.

TW 詳細資料請參考 AH500 系列硬體及操作手冊

CN 详细资料请参考 AH500 系列硬件及操作手册

EN Assembly

TR Montaj

TW 安裝

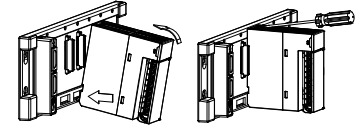
CN 组装

EN Insert the module projections into the holes on the backplane. Then, push the module in the direction indicated by the arrow until it clicks. Finally, tighten the screws on the module.

TR Modül çıkıntısını alt panel üzerindeki deliklere yerleştiriniz. Daha sonra ok işareti ile gösterilen yönde tıkkalayıcıya kadar modülü itiniz. Son olarak modül üzerindeki vidaları sıkınız.

TW 將模組下方的卡勾卡在背板的卡槽，對準背板的 IO 介面將此模組向前壓，安裝後將此模組上方的螺絲鎖緊。

CN 將模块下方的卡勾卡在背板的卡槽，对准背板的 IO 接口将此模块向前压，安装后将此模块上方的螺丝锁紧。



EN Address setting switch

TR Adres ayarı anahtarı

TW 位址設定開關

CN 地址设定开关

Valid address setting: 0~63

Geçerli adres ayarı: 0~63

有效的位址設定為 0~63

有效的地址设定为 0~63

EN Function setting switch

TR Fonksiyon ayarı anahtarı

TW 功能設定開關

CN 功能设定开关

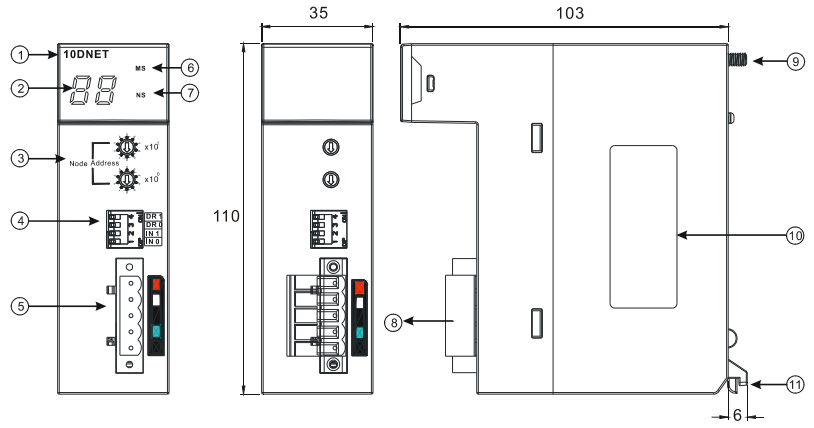
DR1	DR0	Baud rate	Baud rate	通訊速率	通讯速率
OFF	OFF	125 kbps	125 kbps	125 kbps	125 kbps
OFF	ON	250 kbps	250 kbps	250 kbps	250 kbps
ON	OFF	500 kbps	500 kbps	500 kbps	500 kbps
ON	ON	Entering the extension serial transmission rate mode	İlave seri iletim hız oranı modu girme	進入擴展串列傳輸速率模式	进入扩展波特率模式
IN1		Reserved	Rezerve	保留	保留
INO		ON: The previous I/O data is retained when the slave is off-line. OFF: It is cleared.	ON: Slave off-line olduğunda önceki I/O data korunur. OFF: Silinir.	當從站斷線時，保持 (ON) / 清除 (OFF) 之前的 I/O 資料	当从站断线时，保持 (ON) / 清除 (OFF) 之前的 I/O 数据

EN Dimensions(mm) & Product Profile

TR Ölçüler(mm) & Ürün Görünüşü

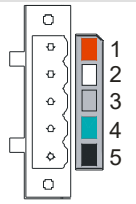
TW 尺寸(mm)及產品外觀

CN 尺寸(mm)及產品外觀



EN	TR	TW	CN
1 Model name	Model adı	機種名稱	机种名称
2 7-segment display	7-segment ekran	七段顯示器	七段显示器
3 Address setting switch	Adres ayarı anahtarı	位址設定開關	地址设定开关
4 Function setting switch	Fonksiyon ayarı anahtarı	功能設定開關	功能设定开关
5 DeviceNet connector interface	DeviceNet bağlantı arabirimi	DeviceNet 連接器介面	DeviceNet 连接器接口
6 MS indicator	MS göstergesi	MS 指示燈	MS 指示灯
7 NS indicator	NS göstergesi	NS 指示燈	NS 指示灯
8 Removable terminal	Sökülebilir terminal	脫落式端子	脱落式端子
9 Screw	Vida	固定螺絲	固定螺丝
10 Label	Etiket	標籤	标签
11 Module clip	Modül klipsi	模組固定卡口	模块固定卡口

EN	TR	TW	CN
1 V+ (Red)	V+ (Kırmızı)	V+ (紅色)	V+ (红色)
2 CAN_H (White)	CAN_H (Beyaz)	CAN_H (白色)	CAN_H (白色)
3 Shield	Ekranlı	接地	接地
4 CAN_L (Blue)	CAN_L (Mavi)	CAN_L (藍色)	CAN_L (蓝色)
5 V- (Black)	V- (Siyah)	V- (黑色)	V- (黑色)



Part Name	有毒物质-Hazardous Substances						台達電子工業股份有限公司		Industrial Automation Headquarters	
	Pb	Hg	Cd	Cr VI	PBB	PBDE	Delta Electronics, Inc.		Delta Greentech (China) Co., Ltd.	
金屬部件 Metal Part	X	o	o	o	o	o	地址: 33068 桃園市桃園區興隆路 18 號 電話: 886-3-3626301 傳真: 886-3-3716301		Taoyuan Technology Center No.18, Xinglong Rd., Taoyuan District, Taoyuan City, 33068, Taiwan TEL: 886-3-362-6301 / FAX: 886-3-371-6301	
塑料部件 Plastic Part	o	o	o	o	o	o	中达电通股份有限公司 地址: 上海市浦东新区民夏路 238 号 邮编: 201209 电话: (021) 5863-5678 传真: (021) 5863-0003		Delta Greentech (China) Co., Ltd. 238 Min-Xia Road, Pudong District, Shanghai, P.R.C. 201209 TEL: 86-21-5863-5678 / FAX: 86-21-5863-0003	
电子件 Electronic	X	o	o	o	o	o	沈阳 电话:(024)2334-1160 太原 电话:(0351)4039-485 郑州 电话:(0371)6297-808 北京 电话:(010)8225-3225		乌鲁木齐 电话:(0991)4678-141 兰州 电话:(0931)6406-725 西安 电话:(029)8836-0780 贵阳 电话:(0851)8690-1374 福州 电话:(0731)8549-9156	
触点 Contacts	o	o	X	o	o	o	济南 电话:(0531)8690-6277 合肥 电话:(0551)6281-6777 武汉 电话:(027)8544-8475 上海 电话:(021)6301-2827		重庆 电话:(023)8806-0306 昆明 电话:(0871)6313-7362 广州 电话:(020)3879-2175 厦门 电话:(0592)5313-601 南宁 电话:(0771)2621-501	
线缆和线缆附件 Cable & Cabling accessories	X	o	o	o	o	o	杭州 电话:(0571)8882-0610 南昌 电话:(0791)8625-5010 成都 电话:(028)8434-2075		天津 电话:(022)2301-5082 南京 电话:(025)8334-6585 长沙 电话:(0731)8549-9156 北京 电话:(010)8225-3225 上海 电话:(021)6301-2827	
电池 Battery	o	o	o	o	o	o	呼浩特 电话:(0471)6297-808 石家庄 电话:(0311)8666-7337 南昌 电话:(0791)8625-5010 厦门 电话:(0592)5313-601 南宁 电话:(0771)2621-501		天津 电话:(022)2301-5082 南京 电话:(025)8334-6585 长沙 电话:(0731)8549-9156 北京 电话:(010)8225-3225 上海 电话:(021)6301-2827	
<p>本表格依据 SJ/T 11364 的规定编制。 O: 表示该有害物质在该部件所有均质材料中的含量均在 GB/T 26572 规定的限量要求以下。 X: 表示该有害物质至少在该部件的某一均质材料中的含量超出 GB/T 26572 规定的限量要求。</p> <p>This table is made according to SJ/T 11364. O: Indicates that the concentration of hazardous substance in all of the homogeneous materials for this part is below the limit as stipulated in GB/T 26572. X: Indicates that concentration of hazardous substance in at least one of the homogeneous materials used for this part is above the limit as stipulated in GB/T 26572.</p> <p>* 本手册内容若有变更, 恕不另行通知。 * 本手册内容若有改动, 恕不另行通知。</p>										
<p>Asia China: Delta Electronics (Shanghai) Co., Ltd. No.182 Minyu Rd., Pudong Shanghai, P.R.C. Post code: 201209 TEL: +86-21-6872-3988 / FAX: +86-21-6872-3996 Customer Service: 400-920-9595 Korea: Delta Electronics (Korea), Inc. 1511, 219, Gusan Digital 1-Ro., Geumcheon-gu, Seoul, 08501 South Korea TEL: +82-2-515-5305 / FAX: +82-2-515-5302 Singapore: Delta Energy Systems (Singapore) Pte Ltd. 4 Kaki Bukit Avenue 1, #05-04, Singapore 417939 TEL: +65-6747-5155 / FAX: +65-6744-9228 India: Delta Electronics (India) Pvt. Ltd. Plot No.43, Sector 35, HSIIDC Gurgaon, PIN 122001, Haryana, India TEL: +91-124-4874900 / FAX: +91-124-4874945</p>			<p>Thailand: Delta Electronics (Thailand) PCL. 909 Soi 9, Moo 4, Bangpoo Industrial Estate (E.P.Z), Pattana 1 Rd., T.Phraksa, A.Muang, Samutprakarn 10280, Thailand TEL: +66-2709-2800 / FAX: +66-2709-2627 Australia: Delta Electronics (Australia) Pty Ltd. Unit 20-2/145 Normanby Rd., (Notting Hill Vic 3168, Australia TEL: +61-3-9543-3720 Americas USA: Delta Electronics (Americas) Ltd. 5101 Davis Drive, Research Triangle Park, NC 27709, U.S.A. TEL: +1-919-767-3813 / FAX: +1-919-767-3969 Brazil: Delta Electronics Brazil Ltd. Estrada Velha Rio-São Paulo, 5300 Eugênio de Melo - São José dos Campos CEP:12247-004-SP- Brazil TEL: +55-12-3932-2300 / FAX: +55-12-3932-237 Mexico: Delta Electronics International Mexico S.A. de C.V. Gustavo Baz No. 309 Edificio E PB 103 Colonia La Loma, CP 54060 Tlalnepantla, Estado de México TEL: +52-55-3603-9200</p>			<p>EMEA EMEA Headquarters: Delta Electronics (Netherlands) B.V. Sales: Sales.IA.EMEA@deltaww.com Marketing: Marketing.IA.EMEA@deltaww.com Technical Support: iatechnicalsupport@deltaww.com Customer Support: Customer-Support@deltaww.com Service: Service.IA.EMEA@deltaww.com TEL: +31(0)40 800 3900 BENELUX: Delta Electronics (Netherlands) B.V. Automotive Campus 260, 5708 JZ Helmond, The Netherlands Mail: Sales.IA.Benelux@deltaww.com TEL: +31(0)40 800 3900 DACH: Delta Electronics (Netherlands) B.V. Coesterweg 45, D-59494 Soest, Germany Mail: Sales.IA.DACH@deltaww.com TEL: +49(0)2921 987 0 France: Delta Electronics (France) S.A. ZI du bois Challand 2, 15 rue des Pyrénées, Lisses, 91090 Evry Cedex, France Mail: Sales.IA.FR@deltaww.com TEL: +33(0)1 69 77 82 60 UK: Delta Electronics Europe Ltd. 1 Redwood Court, East Kilbride, Glasgow, G74 5PF, United Kingdom TEL:+44-1355-588-888</p>			<p>Iberia: Delta Electronics Solutions (Spain) S.L.U Ctra. De Villaverde a Vallecas, 265 1º Dcha Ed. Hormigueras – P.I. de Vallecas 28031 Madrid TEL: +34(0)91 223 74 20 Carrer Llacuna 166, 08018 Barcelona, Spain Mail: Sales.IA.Iberia@deltaww.com Italy: Delta Electronics (Italy) S.r.l. Via Meda 2-22060 Novedrate(CO) Piazza Grazioli 18 00186 Roma Italy Mail: Sales.IA.Italy@deltaww.com TEL: +39 039 8900365 Russia: Delta Energy System LLC Veroyeskaya Plaza II, office 112 Veroyeskaya str. 17 121357 Moscow Russia Mail: Sales.IA.RU@deltaww.com TEL: +7 495 644 3240 Turkey: Delta Greentech Elektronik San. Ltd. Sti. (Turkey) Serfilah Mah. Hendem Cad. Kule Sok. No:16-A 34775 Ümraniye – Istanbul Mail: Sales.IA.Turkey@deltaww.com TEL: +90 216 499 9910 MEA: Elitek Dubai (Elitek MEA DMCC) OFFICE 2504, 25th Floor, Saba Tower 1, Jumeirah Lakes Towers, Dubai, UAE Mail: Sales.IA.MEA@deltaww.com TEL: +971(0)4 2690148</p>	

*We reserve the right to change the information in this instruction sheet without prior notice.