

AS08AN01R-A

EN Instruction Sheet
TR Bilgi Dökümanı
TW 安裝說明
CN 安装说明



5014033502
2022-05-11



www.deltaww.com



- EN ✎ This is an OPEN TYPE module and therefore should be installed in an enclosure free of airborne dust, humidity, electric shock and vibration. The enclosure should prevent non-maintenance staff from operating the device (e.g. key or specific tools are required for operating the enclosure) in case danger and damage on the device may occur.
- FR ✎ Ceci est un module ouvert et il doit donc être installé dans un coffret à l'abri des poussières, des vibrations et ne pas être exposé aux chocs électriques. Le boîtier ou l'armoire doit éviter toute action d'un personnel autre que celui affecté à la maintenance de l'appareil (par exemple, clefs, outils spécifiques pour l'ouverture du coffret), ceci afin d'éviter tout accident corporel ou endommagement du produit).
- TR ✎ Bu ürün AÇIK TİP bir modül olup toz, rutubet, elektrik şoku ve titreşimden uzak kapalı yerlerde muhafaza edilmelidir. Yanlış kullanım sonucu ürünün zarar görmesini önlemek için yetkili olmayan kişiler tarafından ürüne müdahale edilmesini önleyecek koruyucu önlemler alınmalıdır. (Ürünün bulunduğu panoya kilit konulması gibi).
- TW ✎ 本機為開放型 (OPEN TYPE) 機種，因此使用者使用本機時，必須將之安裝於具防塵、防潮及免於電擊衝擊意外之外殼配線箱內。另必須具備保護措施 (如：特殊之工具或鑰匙才可打開) 防止非維護人員操作或意外衝擊本體，造成危險及損壞。
- CN ✎ 本機為開放型 (OPEN TYPE) 機種，因此使用者使用本機時，必須將其安裝於具防塵、防潮及免於電擊/沖擊意外的外殼配線箱內。另必須具備保護措施 (如：特殊的工具或鑰匙才可打開) 防止非維護人員操作或意外沖擊本體，造成危險及損壞。

EN Please refer to the AS Series Hardware and Operation Manual for more information

TR Daha fazla bilgi için lütfen AS Serisi Donanım ve Kullanım Klavuzuna bakınız.

TW 詳細資料請參考 AS 系列硬體及操作手冊

CN 详细资料请参考 AS 系列硬件及操作手册

EN Assembly

TR Montaj

TW 安裝

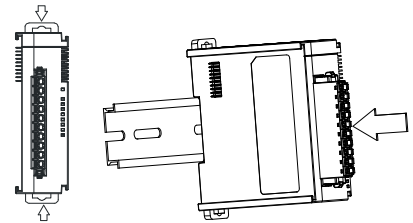
CN 组装

EN Clip up the two DIN rail clip on the module. Parallel the module groove on the back to the DIN rail, then push and slide along until hearing a click.

TR Modül üzerindeki iki DIN ray klipsini dışa doğru çekin. Altındaki modül oyuğunu DIN ray ile paralel konuma getiriniz ve sonra klik sesini duyana kadar klipsleri içe doğru bastırın.

TW 將模組上下方的兩個 DIN 軌固定扣往中間壓後，將模組後方勾槽平行對準 DIN 軌並往 DIN 軌壓直到喀一聲，即完成。

CN 將模塊上下方的兩個 DIN 軌固定扣往中間壓後，將模塊後方勾槽平行對準 DIN 軌並往 DIN 軌壓直到喀一聲，即完成。



EN Output

TR Çıkış

TW 輸出

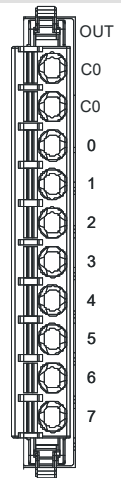
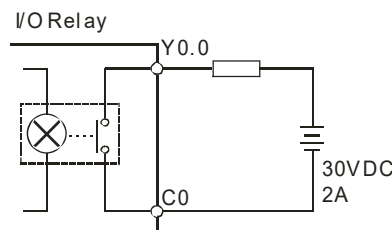
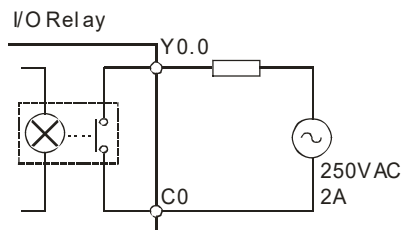
CN 輸出

EN Output wiring, 250VAC/30VDC, 2A/point, 8A/COM, 8-point output, relay

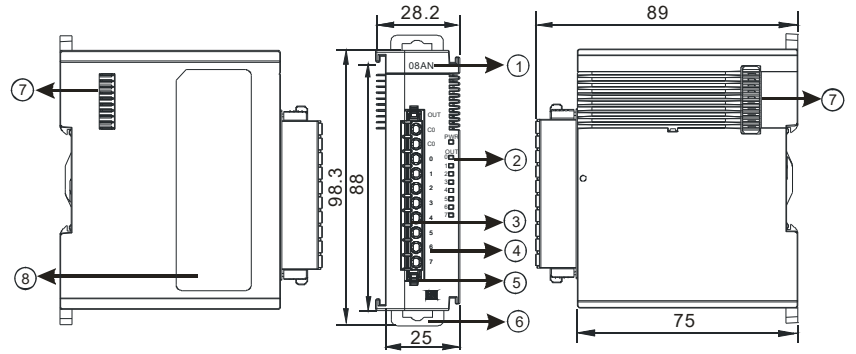
TR Çıkış bağlantısı, 250VAC/30VDC, 2A/nokta, 8A/COM, 8-nokta çıkış, röle

TW 輸出接線，250VAC/30VDC · 2A/點 · 8A/共點 · 8 點輸出 · 繼電器

CN 輸出接線，250VAC/30VDC · 2A/點 · 8A/共點 · 8 點輸出 · 繼電器

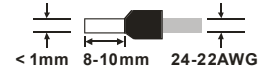


EN Dimensions(mm) & Product Profile
 TR Ölçüler(mm) & Ürün Görünüşü
 TW 尺寸 (mm) 及產品外觀
 CN 尺寸 (mm) 及產品外觀



EN	TR	TW	CN
1 Model name	Model adı	機種名稱	机种名称
2 Status indicator	Durum göstergesi	狀態指示燈	状态指示灯
3 Removable terminal block	Sökülebilir terminal bloğu	脫落式端子	脱落式端子
4 I/O terminal configuration	I/O terminal yapılandırma	輸入輸出端子配置	输入输出端子配置
5 Removable terminal clasp	Sökülebilir terminal kenetleyici	脫落式端子拉勾	脱落式端子固定杆
6 DIN rail clip	DIN ray klipsi	DIN 軌固定扣	DIN 轨固定扣
7 Extension module communication port	Genişleme modülü iletişim portu	擴充模組通訊埠	扩充模块通讯端口
8 Label	Etiket	標籤	标签

EN Wiring	TR Bağlantı	TW 配線	CN 配线
EN	Please use single-core or multi-core cables. The diameters of the cables used should be within the range between 24 AWG and 22 AWG (1 mm). The specifications for the terminals and the wiring are shown in the figure. The temperature of the copper conductor should be 60/75°C.		
TR	Lütfen tek damarlı veya çok damarlı kablo kullanın. Kullanılan kablo çapı 24 AWG ve 22 AWG (<1 mm) aralığında olmalıdır. Terminal ve bağlantı özellikleri şekilde gösterilmiştir. Bakır iletkenin sıcaklığı 60/75°C 'ye kadar olmalıdır.		
TW	輸出 / 入配線端請使用 24-22AWG (1mm) 單蕊裸線或多蕊線，端子規格及配線示意圖如右所示。只能使用 60/75°C 的銅導線。		
CN	输出 / 入配线端请使用 24-22AWG (1mm) 单蕊裸线或多蕊线，端子规格及配线示意图如右所示。只能使用 60/75°C 的铜导线。		



Part Name	Hazardous Substances						台達電子工業股份有限公司 機電事業群 地址：33068 桃園市桃園區興隆路 18 號 電話：886-3-3626301 傳真：886-3-3716301	Industrial Automation Headquarters Delta Electronics, Inc. Taoyuan Technology Center No.18, Xinglong Rd., Taoyuan District, Taoyuan City, 33068, Taiwan TEL: 886-3-362-6301 / FAX: 886-3-371-6301																																																																
	Pb	Hg	Cd	Cr(VI)	PBB	PBDE		中达电通股份有限公司 地址：上海市浦东新区民夏路 238 号 邮编：201209 电话：(021) 5863-5678 传真：(021) 5863-0003																																																																
金属部分 Metal Part	X	O	O	O	O	O	Delta Greentech (China) Co., Ltd. 238 Min-Xia Road, Pudong District, Shanghai, P.R.C. 201209 TEL: 86-21-5863-5678 / FAX: 86-21-5863-0003																																																																	
塑料部分 Plastic Part	O	O	O	O	O	O																																																																		
电子元件 Electronic	X	O	O	O	O	O	<table border="0"> <tr> <td>沈阳</td><td>济南</td><td>杭州</td><td>重庆</td><td>乌鲁木齐</td><td>天津</td> </tr> <tr> <td>电话:(024)2334-1160</td><td>电话:(0531)8690-6277</td><td>电话:(0571)8882-0610</td><td>电话:(023)8806-0306</td><td>电话:(0991)4678-141</td><td>电话:(022)2301-5082</td> </tr> <tr> <td>哈尔滨</td><td>太原</td><td>合肥</td><td>昆明</td><td>兰州</td><td>南京</td> </tr> <tr> <td>电话:(0451)5366-5668</td><td>电话:(0351)4039-485</td><td>电话:(0551)6281-6777</td><td>电话:(0871)6313-7362</td><td>电话:(0931)6406-725</td><td>电话:(025)8334-6585</td> </tr> <tr> <td>长春</td><td>郑州</td><td>武汉</td><td>广州</td><td>西安</td><td>长沙</td> </tr> <tr> <td>电话:(0431)8892-5060</td><td>电话:(0371)6384-2772</td><td>电话:(027)8544-8475</td><td>电话:(020)3879-2175</td><td>电话:(029)8836-0780</td><td>电话:(0731)8549-9156</td> </tr> <tr> <td>呼和浩特</td><td>石家庄</td><td>南昌</td><td>厦门</td><td>贵阳</td><td>福州</td> </tr> <tr> <td>电话:(0471)6297-808</td><td>电话:(0311)8666-7337</td><td>电话:(0791)8625-5010</td><td>电话:(0592)5313-601</td><td>电话:(0851)8690-1374</td><td>电话:(0591)8755-1305</td> </tr> <tr> <td>北京</td><td>上海</td><td>成都</td><td>南宁</td><td>北京</td><td>上海</td> </tr> <tr> <td>电话:(010)8225-3225</td><td>电话:(021)6301-2827</td><td>电话:(028)8434-2075</td><td>电话:(0771)2621-501</td><td>电话:(010)8225-3225</td><td>电话:(021)6301-2827</td> </tr> </table>						沈阳	济南	杭州	重庆	乌鲁木齐	天津	电话:(024)2334-1160	电话:(0531)8690-6277	电话:(0571)8882-0610	电话:(023)8806-0306	电话:(0991)4678-141	电话:(022)2301-5082	哈尔滨	太原	合肥	昆明	兰州	南京	电话:(0451)5366-5668	电话:(0351)4039-485	电话:(0551)6281-6777	电话:(0871)6313-7362	电话:(0931)6406-725	电话:(025)8334-6585	长春	郑州	武汉	广州	西安	长沙	电话:(0431)8892-5060	电话:(0371)6384-2772	电话:(027)8544-8475	电话:(020)3879-2175	电话:(029)8836-0780	电话:(0731)8549-9156	呼和浩特	石家庄	南昌	厦门	贵阳	福州	电话:(0471)6297-808	电话:(0311)8666-7337	电话:(0791)8625-5010	电话:(0592)5313-601	电话:(0851)8690-1374	电话:(0591)8755-1305	北京	上海	成都	南宁	北京	上海	电话:(010)8225-3225	电话:(021)6301-2827	电话:(028)8434-2075	电话:(0771)2621-501	电话:(010)8225-3225	电话:(021)6301-2827
沈阳	济南	杭州	重庆	乌鲁木齐	天津																																																																			
电话:(024)2334-1160	电话:(0531)8690-6277	电话:(0571)8882-0610	电话:(023)8806-0306	电话:(0991)4678-141	电话:(022)2301-5082																																																																			
哈尔滨	太原	合肥	昆明	兰州	南京																																																																			
电话:(0451)5366-5668	电话:(0351)4039-485	电话:(0551)6281-6777	电话:(0871)6313-7362	电话:(0931)6406-725	电话:(025)8334-6585																																																																			
长春	郑州	武汉	广州	西安	长沙																																																																			
电话:(0431)8892-5060	电话:(0371)6384-2772	电话:(027)8544-8475	电话:(020)3879-2175	电话:(029)8836-0780	电话:(0731)8549-9156																																																																			
呼和浩特	石家庄	南昌	厦门	贵阳	福州																																																																			
电话:(0471)6297-808	电话:(0311)8666-7337	电话:(0791)8625-5010	电话:(0592)5313-601	电话:(0851)8690-1374	电话:(0591)8755-1305																																																																			
北京	上海	成都	南宁	北京	上海																																																																			
电话:(010)8225-3225	电话:(021)6301-2827	电话:(028)8434-2075	电话:(0771)2621-501	电话:(010)8225-3225	电话:(021)6301-2827																																																																			
触点 Contacts	O	O	X	O	O	O																																																																		
线缆和线缆附件 Cable & Cabling accessories	X	O	O	O	O	O																																																																		
电池 Battery	O	O	O	O	O	O																																																																		
本表格依据 SJ/T 11364 的规定编制。 O：表示该有害物质在该部件所有均质材料中的含量均在 GB/T 26572 规定的限量要求以下。 X：表示该有害物质在该部件的某一均质材料中的含量超出 GB/T 26572 规定的限量要求。 This table is made according to SJ/T 11364. O: Indicates that the concentration of hazardous substance in all of the homogeneous materials for this part is below the limit as stipulated in GB/T 26572. X: Indicates that concentration of hazardous substance in at least one of the homogeneous materials used for this part is above the limit as stipulated in GB/T 26572.							* 本手册内容若有变更，恕不另行通知。																																																																	
Asia China: Delta Electronics (Shanghai) Co., Ltd. No.182 Minyu Rd., Pudong Shanghai, P.R.C. Post code: 201209 TEL: +86-21-6872-3988 / FAX: +86-21-6872-3996 Customer Service: 400-820-9595 Japan: Delta Electronics (Japan), Inc. Industrial Automation Sales Department 2-1-14 Shibadaimon, Minato-ku Tokyo, Japan 105-0012 TEL: +81-3-5733-1155 / FAX: +81-3-5733-1255 Korea: Delta Electronics (Korea), Inc. 1511, 219, Gasan Digital 1-Ro., Geumcheon-gu, Seoul, 08501 South Korea TEL: +82-2-515-5305 / FAX: +82-2-515-5302 Singapore: Delta Energy Systems (Singapore) Pte Ltd. 4 Kaki Bukit Avenue 1, #05-04, Singapore 417939 TEL: +65-6747-5155 / FAX: +65-6744-9228 India: Delta Electronics (India) Pvt. Ltd. Plot No.43, Sector 35, HSIIDC Gurgaon, PIN 122001, Haryana, India TEL: +91-124-4874900 / FAX: +91-124-4874945							Thailand: Delta Electronics (Thailand) PCL. 909 Soi 9, Moo 4, Bangpoo Industrial Estate (E.P.P.Z), Pattana 1 Rd., T.Phraksa, A.Muang, Samutprakarn 10280, Thailand TEL: +66-2709-2800 / FAX: +66-2709-2827 Australia: Delta Electronics (Australia) Pty Ltd. Unit 20-21/45 Normanby Rd., Notting Hill VIC 3168, Australia TEL: +61-3-9543-3720 Americas USA: Delta Electronics (Americas) Ltd. 5101 Davis Drive, Research Triangle Park, NC 27709, U.S.A. TEL: +1-919-767-3813 / FAX: +1-919-767-3969 Brazil: Delta Electronics Brazil Ltd. Estrada Velha Rio-São Paulo, 5300 Eugênio de Melo - São José dos Campos CEP:12247-004-SP- Brazil TEL: +55-12-3932-2300 / FAX: +55-12-3932-237 Mexico: Delta Electronics International Mexico S.A. de C.V. Gustavo Baz No. 309 Edificio E PB 103 Colonia La Loma, CP 54060 Tlalnepanitla, Estado de México TEL: +52-55-3603-9200						EMEA EMEA Headquarters: Delta Electronics (Netherlands) B.V. Sales: Sales.IA.EMEA@deltaww.com Marketing: Marketing.IA.EMEA@deltaww.com Technical Support: iatechnicalsupport@deltaww.com Customer Support: Customer-Support@deltaww.com Service: Service.IA.emea@deltaww.com TEL: +31(0)40 800 3900 DACH: Delta Electronics (Netherlands) B.V. Coesterweg 45, D-59494 Soest, Germany Mail: Sales.IA.DACH@deltaww.com TEL: +49(0)2921 987 0 France: Delta Electronics (France) S.A. ZI du bois Challand 2, 15 rue des Pyrénées, Lisses, 91090 Evry Cedex, France Mail: Sales.IA.FR@deltaww.com TEL: +33(0)1 69 77 82 60 UK: Delta Electronics Europe Ltd. 1 Redwood Court, East Kilbride, Glasgow, G74 5PF, United Kingdom TEL: +44-1355-588-888						Iberia: Delta Electronics Solutions (Spain) S.L.U Ctra. De Villaverde a Vallecas, 265 1º Dcha Ed. Hormigueras - P.I. de Vallecas 28031 Madrid TEL: +34(0)91 223 74 20 Carrer Lisacuna 166, 08018 Barcelona, Spain Mail: Sales.IA.Iberia@deltaww.com Italy: Delta Electronics (Italy) S.r.l. Via Meda 2-22060 Novedrate(CO) Piazza Grazioli 18 00186 Roma Italy Mail: Sales.IA.Italy@deltaww.com TEL: +39 039 8900365 Russia: Delta Energy System LLC Vereyskaya Plaza II, office 112 Vereyskaya str. 17 121357 Moscow Russia Mail: Sales.IA.RU@deltaww.com TEL: +7 495 644 3240 Turkey: Delta Greentech Elektronik San. Ltd. Sti. (Turkey) Serfil Mah. Hendem Cad. Kule Sok. No:16-A 34775 Ümraniye - İstanbul Mail: Sales.IA.Turkey@deltaww.com TEL: +90 216 499 9970 MEA: Ettek Dubai (Ettek DMCC) OFFICE 2504, 25th Floor, Saba Tower 1, Jumeirah Lakes Towers, Dubai, UAE Mail: Sales.IA.MEA@deltaww.com TEL: +971(0)4 2690148																																																					
*We reserve the right to change the information in this instruction sheet without prior notice.																																																																								