

# AS320T-B AS320P-B

EN Instruction Sheet  
TR Bilgi Dökümanı  
TW 安裝說明  
CN 安装说明



5014085601  
2022-05-12



[www.deltaww.com](http://www.deltaww.com)



- EN ✘ This is an OPEN TYPE module and therefore should be installed in an enclosure free of airborne dust, humidity, electric shock and vibration. The enclosure should prevent non-maintenance staff from operating the device (e.g. key or specific tools are required for operating the enclosure) in case danger and damage on the device may occur.
- FR ✘ Ceci est un module ouvert et il doit donc être installé dans un coffret à l'abri des poussières, des vibrations et ne pas être exposé aux chocs électriques. Le boîtier ou l'armoire doit éviter toute action d'un personnel autre que celui affecté à la maintenance de l'appareil (par exemple, clefs, outils spécifiques pour l'ouverture du coffret), ceci afin d'éviter tout accident corporel ou endommagement du produit).
- TR ✘ Bu ürün AÇIK TİP bir modül olup toz, rutubet, elektrik şoku ve titreşimden uzak kapalı yerlerde muhafaza edilmelidir. Yanlış kullanım sonucu ürünün zarar görmesini önlemek için yetkili olmayan kişiler tarafından ürüne müdahale edilmesini önleyecek koruyucu önlemler alınmalıdır. (Ürünün bulunduğu panoya kilit konulması gibi).
- TW ✘ 本機為開放型 (OPEN TYPE) 機種，因此使用者使用本機時，必須將之安裝於具防塵、防潮及免於電擊/衝擊意外之外殼配線箱內。另必須具備保護措施 (如：特殊之工具或鑰匙才可打開) 防止非維護人員操作或意外衝擊本體，造成危險及損壞。
- CN ✘ 本机为开放型 (OPEN TYPE) 机种，因此使用者使用本机时，必须将其安装于具防尘、防潮及免于电击/冲击意外的外壳配线箱内。另必须具备保护措施 (如：特殊的工具或钥匙才可打开) 防止非维护人员操作或意外冲击本体，造成危险及损坏。

EN Please refer to the AS Series Hardware and Operation Manual for more information.

TR Daha fazla bilgi için lütfen AS Serisi Donanım ve Kullanım Klavuzuna bakınız.

TW 詳細資料請參考 AS 系列硬體及操作手冊

CN 详细资料请参考 AS 系列硬件及操作手册

EN Assembly

TR Montaj

TW 安裝

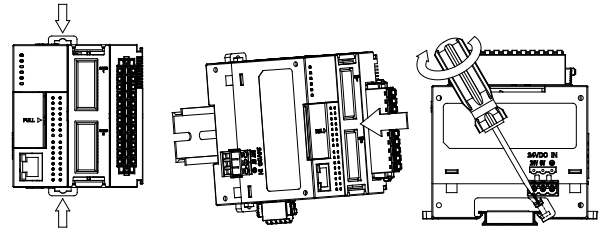
CN 组装

EN Clip up the two DIN rail clip on the module. Parallel the module groove on the back to the DIN rail, then push and slide along until hearing a click.

TR Modül üzerindeki iki DIN ray klipsini dışa doğru çekin. Altındaki modül oyuğunu DIN ray ile paralel konuma getiriniz ve sonra klik sesini duyana kadar klipsleri içe doğru bastırın.

TW 將模組上下方的兩個 DIN 軌固定扣往中間壓後，將模組後方勾槽平行對準 DIN 軌並往 DIN 軌壓直到喀一聲，即完成。

CN 将模块上下方的两个 DIN 轨固定扣往中间压后，将模块后方勾槽平行对准 DIN 轨并往 DIN 轨压直到喀一声，即完成。



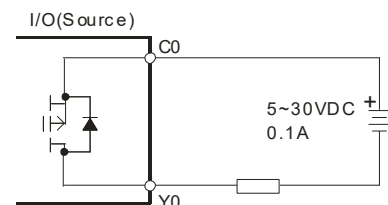
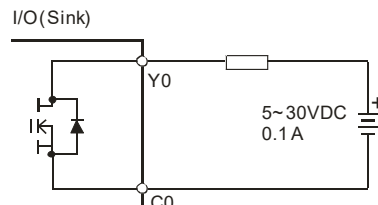
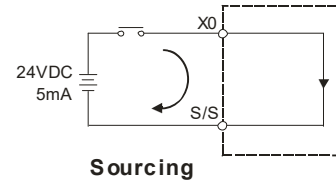
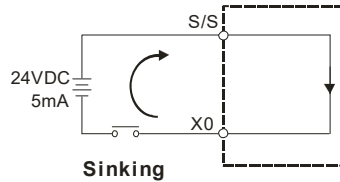
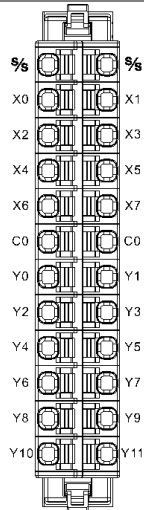
EN I/O

TR I/O

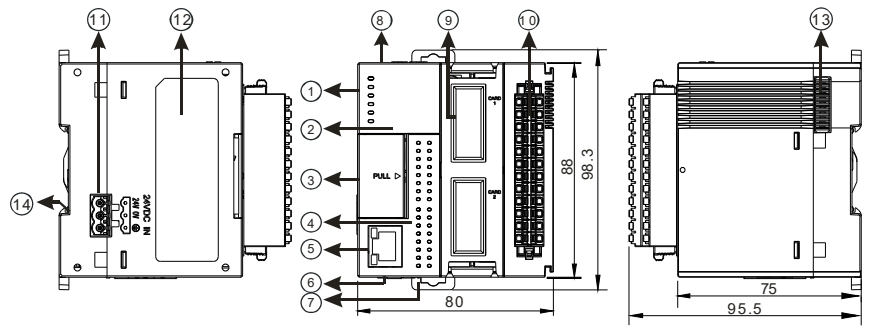
TW 輸入輸出

CN 輸入輸出

Input type: SINK, SOURCE



EN Dimensions(mm) & Product Profile  
 TR Ölçüler(mm) & Ürün Görünüşü  
 TW 尺寸 (mm) 及產品外觀  
 CN 尺寸 (mm) 及产品外观



EN	TR	TW	CN
1 Status indicator	Durum göstergesi	狀態指示燈	状态指示灯
2 Model name	Model adı	機種名稱	机种名称
3 RUN/STOP switch, USB communication port, SD card slot, VR0/VR1	RUN/STOP anahtarı, USB haberleşme port, SD kard slot, VR0/VR1	RUN/STOP 開關、USB 通訊埠、SD 卡插槽、VR0/VR1	RUN/STOP 开关、USB 通訊口、SD 卡插槽、VR0/VR1
4 I/O indicator	I/O indikatör	I/O 指示燈	I/O 指示灯
5 Ethernet communication port	Ethernet haberleşme port	Ethernet 通訊埠	Ethernet 通訊口
6 COM1/COM2 port	COM1/COM2 port	COM1/COM2 埠	COM1/COM2 端口
7 DIN rail clip	DIN ray klipsi	DIN 軌固定扣	DIN 軌固定扣
8 Battery holder (battery NOT included)	Pil yuvası (pil dahil değildir)	電池座 (本產品不隨機附贈電池)	电池座 (本产品不随机附赠电池)
9 Extension card slot	Genişleme kart slotu	擴充卡插槽	扩充卡插槽
10 Removable terminal block	Sökülebilir terminal bloğu	脫落式端子	脱落式端子
11 DC power input	DC power girişi	電源輸入口	电源输入口
12 Label	Etiket	標籤	标签
13 Extension communication port	Genişleme modülü iletişim portu	擴充模組通訊埠	扩充模块通讯端口
14 Grounding shrapnel	Topraklama parçası	接地彈片	接地弹片

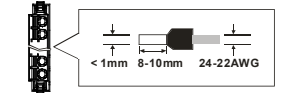
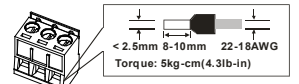
EN Wiring TR Bağlantı TW 配線 CN 配线

EN Please use single-core or multi-core cables. The specifications for the terminals and the wiring are shown in the figure. The temperature of the copper conductor should be 60/75°C.

TR Lütfen tek damarlı veya çok damarlı kablolar kullanınız. Klemensler ve bağlantılar ile ilgili özellikler şekilde gösterilmektedir. Bakır iletken sıcaklığı 60/75°C olmalıdır.

TW 輸出 / 入配線端請使用單蕊裸線或多蕊線。端子與線材規格示意圖如右所示。只能使用 60/75°C 的銅導線。

CN 輸出 / 入配線端請使用單蕊裸線或多蕊線。端子與線材規格示意圖如右所示。只能使用 60/75°C 的銅導線。



Part Name	有毒物质-Hazardous Substances						台達電子工業股份有限公司		Industrial Automation Headquarters	
	Pb	Hg	Cd	Cr(VI)	PBB	PBDE	Delta Electronics (China) Co., Ltd.		Delta Electronics, Inc.	
金屬部分 Metal Part	X	O	O	O	O	O	地址: 33068 桃園市桃園區興隆路 18 號 電話: 886-3-3626301 傳真: 886-3-3716301		Taoyuan Technology Center No.18, Xinglong Rd., Taoyuan District, Taoyuan City, 33068, Taiwan TEL: 886-3-362-6301 / FAX: 886-3-371-6301	
塑料部分 Plastic Part	O	O	O	O	O	O	中达电通股份有限公司 地址: 上海市浦东新区民夏路 238 号 邮编: 201209 电话: (021) 5863-5678 传真: (021) 5863-0003		238 Min-Xia Road, Pudong District, Shanghai, P.R.C. 201209 TEL: 86-21-5863-5678 / FAX: 86-21-5863-0003	
电子元件 Electronic Components	X	O	O	O	O	O	沈阳 电话:(024)2334-1160 济南 电话:(0531)8690-6277 杭州 电话:(0571)8882-0610 重庆 电话:(023)8806-0306 乌鲁木齐 电话:(0991)4678-141 天津 电话:(022)2301-5082		哈尔滨 电话:(0451)5366-5568 太原 电话:(0351)4039-485 合肥 电话:(0551)6281-6777 昆明 电话:(0871)6313-7362 兰州 电话:(0931)6406-725 南京 电话:(025)8334-6585	
触点 Contacts	O	O	X	O	O	O	长春 电话:(0431)8892-5060 郑州 电话:(0371)6384-2772 武汉 电话:(027)8544-8475 广州 电话:(020)3879-2175 西安 电话:(029)8836-0780 长沙 电话:(0731)8549-9156		呼和浩特 电话:(0471)6297-808 石家庄 电话:(0311)8666-7337 南昌 电话:(0791)8625-5010 厦門 电话:(0592)5313-601 贵阳 电话:(0851)8690-1374 福州 电话:(0591)8755-1305	
线缆和线缆附件 Cable & Cabling accessories	X	O	O	O	O	O	北京 电话:(010)8225-3225 上海 电话:(021)6301-2827 成都 电话:(028)8434-2075 南宁 电话:(0771)2621-501 北京 电话:(010)8225-3225 上海 电话:(021)6301-2827		* 本手册内容若有变动, 恕不另行通知。	
电池 Battery	O	O	O	O	O	O	* 本手册内容若有变动, 恕不另行通知。		* 本手册内容若有变动, 恕不另行通知。	
<p>本表格依据 SJ/T 11364 的规定编制。            O: 表示该有害物质在该部件所有均质材料中的含量均在 GB/T 26572 规定的限量要求以下。            X: 表示该有害物质在该部件的某一均质材料中的含量超出 GB/T 26572 规定的限量要求。</p> <p>This table is made according to SJ/T 11364.            O: Indicates that the concentration of hazardous substance in all of the homogeneous materials for this part is below the limit as stipulated in GB/T 26572.            X: Indicates that concentration of hazardous substance in at least one of the homogeneous materials used for this part is above the limit as stipulated in GB/T 26572.</p>										
<b>Asia</b> <b>China: Delta Electronics (Shanghai) Co., Ltd.</b> No.182 Minyu Rd., Pudong Shanghai, P.R.C. Post code: 201209 TEL: +86-21-6872-3988 / FAX: +86-21-6872-3996 Customer Service: 400-820-9595 <b>Japan: Delta Electronics (Japan), Inc.</b> Industrial Automation Sales Department 2-1-14 Shibadaimon, Minato-ku Tokyo, Japan 105-0012 TEL: +81-3-5733-1155 / FAX: +81-3-5733-1255 <b>Korea: Delta Electronics (Korea), Inc.</b> 1511, 219, Gasan Digital 1-Ro., Geumcheon-gu, Seoul, 08501 South Korea TEL: +82-2-515-5305 / FAX: +82-2-515-5302 <b>Singapore: Delta Energy Systems (Singapore) Pte Ltd.</b> 4 Kaki Bukit Avenue 1, #05-04, Singapore 417939 TEL: +65-6747-5155 / FAX: +65-6744-9228 <b>India: Delta Electronics (India) Pvt. Ltd.</b> Plot No.43, Sector 35, HSIIDC Gurgaon, PIN 122001, Haryana, India TEL: +91-124-4874900 / FAX: +91-124-4874945			<b>Thailand: Delta Electronics (Thailand) PCL.</b> 909 Soi 9, Moo 4, Bangpoo Industrial Estate (E.P.Z), Pattana 1 Rd., T.Phraaks, A.Muang, Samutprakarn 10280, Thailand TEL: +66-2709-2800 / FAX: +66-2709-2827 <b>Australia: Delta Electronics (Australia) Pty Ltd.</b> Unit 20-21/45 Normanby Rd., Notting Hill Vic 3168, Australia TEL: +61-3-9543-3720 <b>Americas</b> <b>USA: Delta Electronics (Americas) Ltd.</b> 5101 Davis Drive, Research Triangle Park, NC 27709, U.S.A. TEL: +1-919-767-3813 / FAX: +1-919-767-3969 <b>Brazil: Delta Electronics Brazil Ltd.</b> Estrada Velha Rio-Sao Paulo, 5300 Eugênio de Melo - São José dos Campos CEP:12247-004-SP- Brazil TEL: +55-12-3932-2300 / FAX: +55-12-3932-237 <b>Mexico: Delta Electronics International Mexico S.A. de C.V.</b> Gustavo Baz No. 309 Edificio E PB 103 Colonia La Loma, CP 54060 Tlalneantla, Estado de México TEL: +52-55-3603-9200			<b>EMEA</b> <b>EMEA Headquarters: Delta Electronics (Netherlands) B.V.</b> Sales: Sales.IA.EMEA@deltaww.com Marketing: Marketing.IA.EMEA@deltaww.com Technical Support: iatechnicalsupport@deltaww.com Customer Support: Customer-Support@deltaww.com Service: Service.IA.emea@deltaww.com TEL: +31(0)40 800 3900 <b>DACH: Delta Electronics (Netherlands) B.V.</b> Coestorweg 45, D-59494 Soest, Germany Mail: Sales.IA.DACH@deltaww.com TEL: +49(0)2921 987 0 <b>France: Delta Electronics (France) S.A.</b> ZI du bois Challand 2, 15 rue des Pyrénées, Lisses, 91090 Evry Cedex, France Mail: Sales.IA.FR@deltaww.com TEL: +33(0)1 69 77 82 60 <b>UK: Delta Electronics Europe Ltd.</b> 1 Redwood Court, East Kilbride, Glasgow, G74 5PF, United Kingdom TEL:+44-1355-588-888		<b>Iberia: Delta Electronics Solutions (Spain) S.L.U</b> Ctra. De Villaverde de Vallecas, 265 1º Dcha Ed. Hormigueras - P.I. de Vallecas 28031 Madrid TEL: +34(0)91 223 74 20 Carrer Lisacuna 166, 08018 Barcelona, Spain Mail: Sales.IA.Iberia@deltaww.com <b>Italy: Delta Electronics (Italy) S.r.l.</b> Via Meda 2-22060 Novedrate(CO) Piazza Grazioli 18 00186 Roma Italy Mail: Sales.IA.Italy@deltaww.com TEL: +39 039 8900365 <b>Russia: Delta Electronics System LLC</b> Vereyskaya Plaza II, office 112 Vereyskaya str. 17 121357 Moscow Russia Mail: Sales.IA.RU@deltaww.com TEL: +7 495 644 3240 <b>Turkey: Delta Greentech Elektronik San. Ltd. Sti. (Turkey)</b> Serfilah Mah. Hendem Cad. Kule Sok. No:16-A 34775 Ümraniye - İstanbul Mail: Sales.IA.Turkey@deltaww.com TEL: + 90 216 499 9970 <b>MEA: Ettek Dubai (Ettek MEA DMCC)</b> OFFICE:2504, 25th Floor, Saba Tower 1, Jumeirah Lakes Towers, Dubai, UAE Mail: Sales.IA.MEA@deltaww.com TEL: +971(0)4 2690148		
*We reserve the right to change the information in this instruction sheet without prior notice.										